

The Douglass



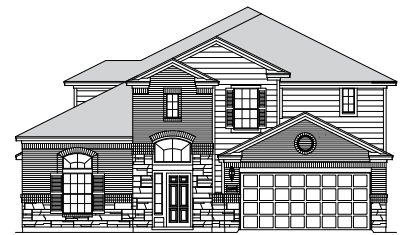
ELEVATION B



ELEVATION A

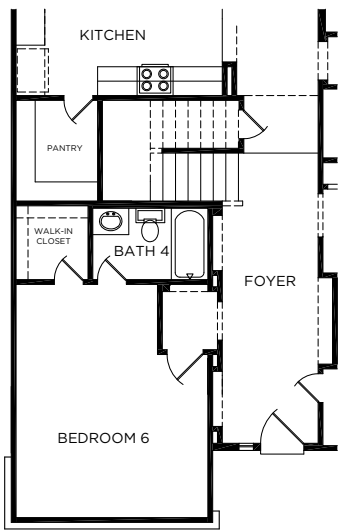


ELEVATION A
(with stone option)

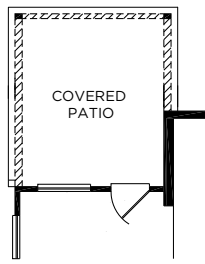


ELEVATION B
(with stone option)

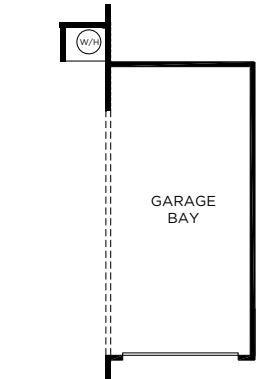




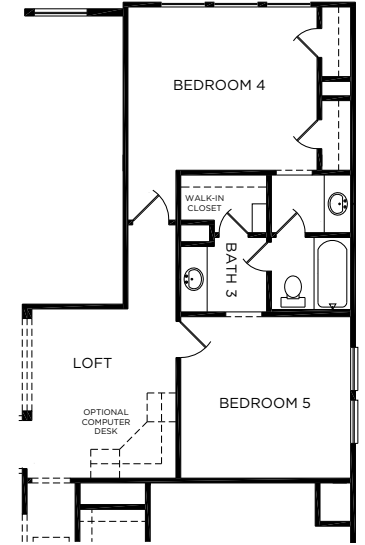
OPTIONAL BEDROOM 6/BATH 4
FIRST FLOOR



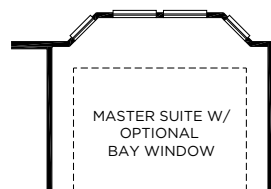
OPTIONAL COVERED PATIO



OPTIONAL
3-CAR GARAGE*

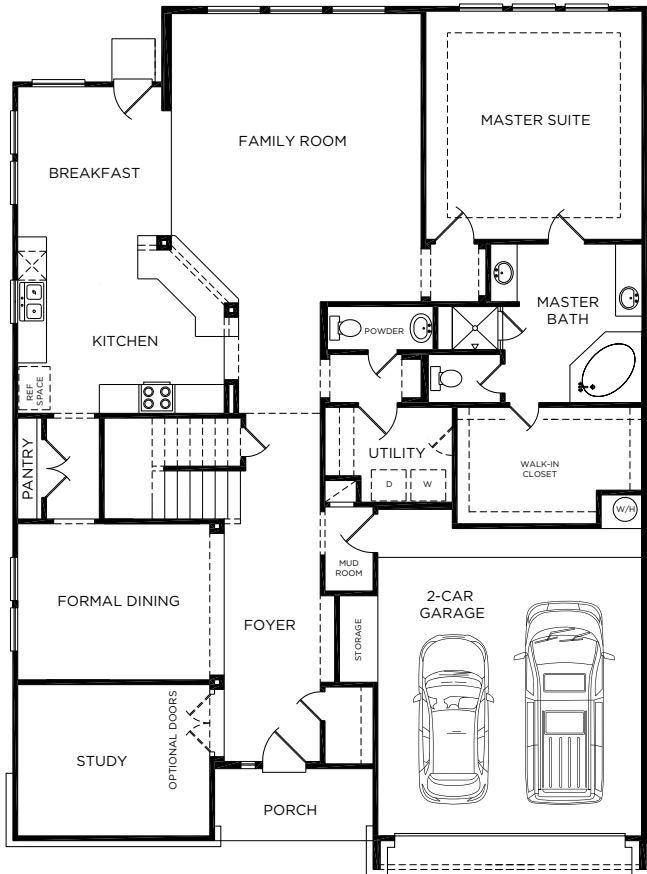


OPTIONAL LOFT/BEDROOM 5
SECOND FLOOR

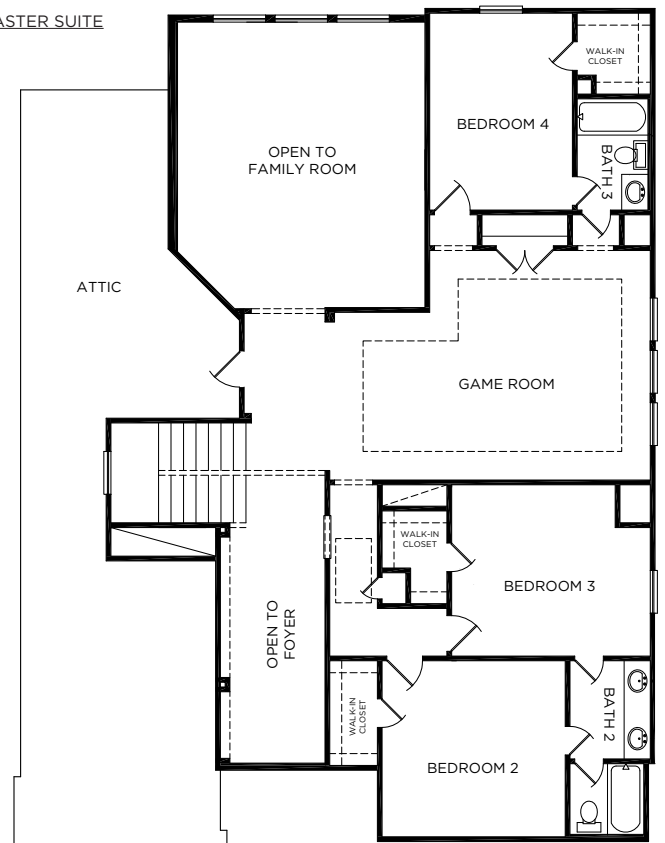


MASTER SUITE W/
OPTIONAL
BAY WINDOW

OPTIONAL MASTER SUITE



FIRST FLOOR



SECOND FLOOR

The Douglass

Approximate Square Footage: 3281

4 Bedrooms / 3.5 Baths

Optional Covered Rear Patio

Optional Bedroom 5 with Loft

Optional Bedroom 6 with Bath 4

Optional Garage Bay or 5' Storage Extension*

*Optional 3-car garage or 5' storage extension available for oversized homesites only. Check with sales for fit.



All information (including, but not limited to prices availability, incentives, floor plans, site plans, features, standards and options, assessments, and fees, planned amenities, programs, conceptual artists' renderings and community development plans) is not guaranteed and remains subject to change or delay without notice. Maps and plans are not to scale and all dimensions are approximate. Please see a Liberty Home Builders Sales Associate for details and visit www.libertyhomebuilders.com for additional disclaimers.

